



RIKO[®]

ONIAR

FOREST TRAILERS, CRANES & GRABS



Hydraulic oil tank mounted under the support legs is well protected and it does not reduce the operators field of view during the work.

①



All cylinders have strong welded fittings, that protect hydraulic couplings and ensure their durability.

②



Strong welded king boom with 21 kNm slewing torque.

③



A massive 60 mm thick king boom baseplate is designed using thermoforming procedure which is 2 times more durable than welding and it does not damage the gear shaft structure.

④



Vertically positioned, strong 125 mm lifting cylinder ensures the crane powerful performance.

⑤



For maximum oil flow with minimum obstruction all the hydraulic system hoses, -pipes, -couplings and cylinder inlet/outlet openings are dimensioned 1/2".

⑥



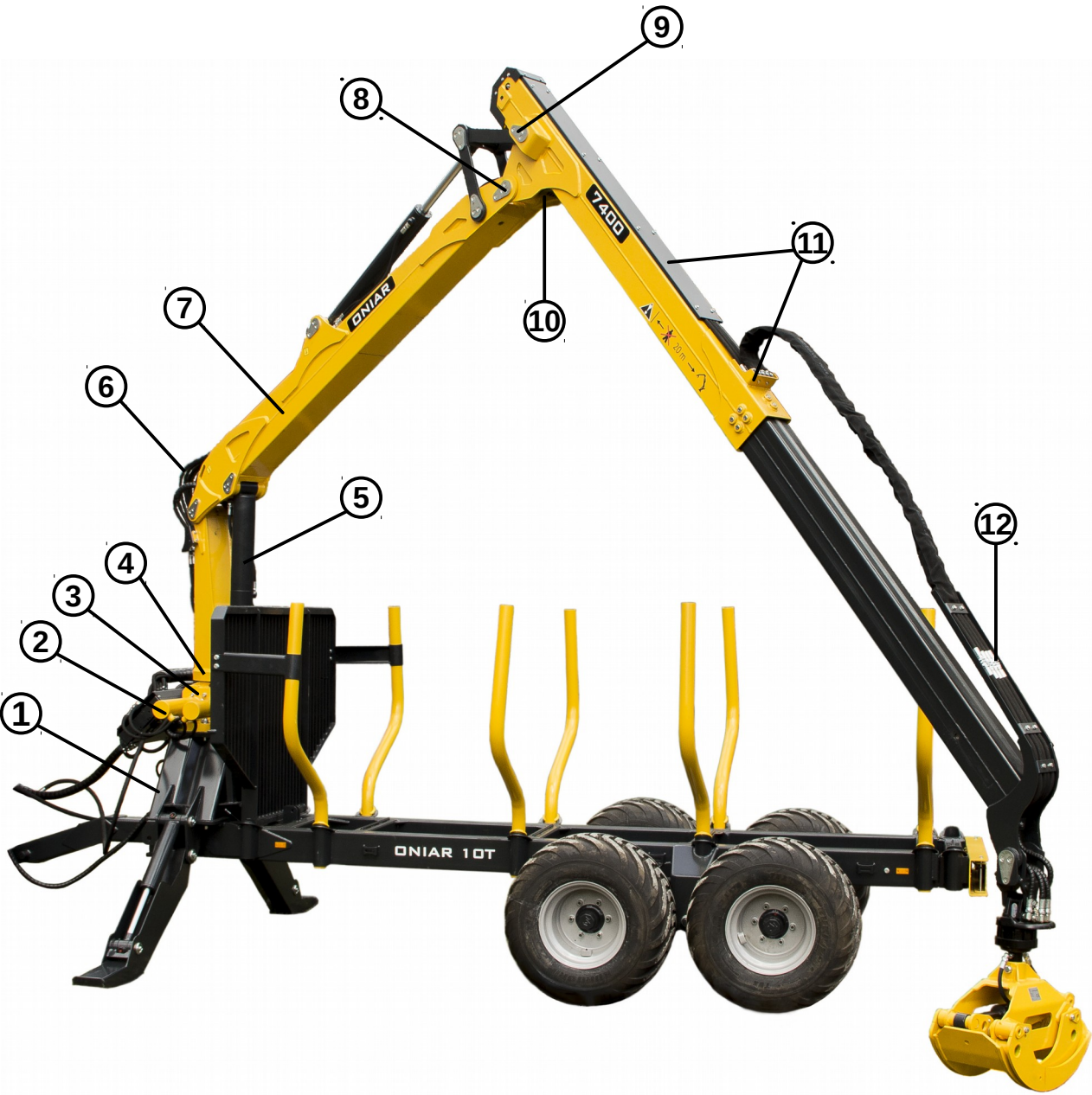
The crane large profile construction guarantees the best durability and distribution of forces inside the construction..

⑦



The crane main pins diameter are 50-60 mm. To provide the best durability with minimal wear, all pins are chrome plated and made of strength class HV900.

⑧



⑨ Bronze bushings have inner spiral grooves that enable the grease to distribute evenly inside the pin seat. In addition, the pin seats are fitted with gaskets which have reduced the lubrication period 10 times compared to the cranes before.



⑩ The working light, located between the folding boom connecting plates, is completely protected by the crane construction and it ensures the best and most precise lighting of the grapple.



⑪ Hidden and protected hydraulic hoses reduce the possibility of hoses getting stuck and/or brake while working in forest.

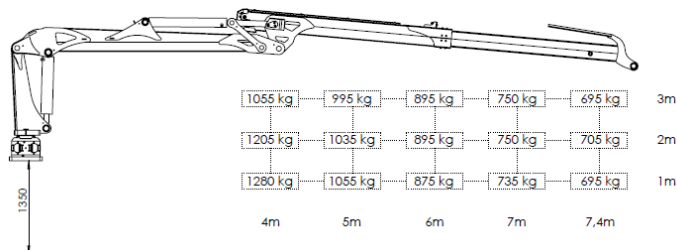
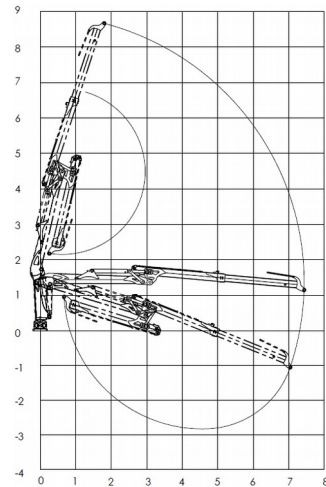


⑫ All hydraulic couplings are designed with 1/2" straight ends, because of that finding and replacing the spareparts is very easy.

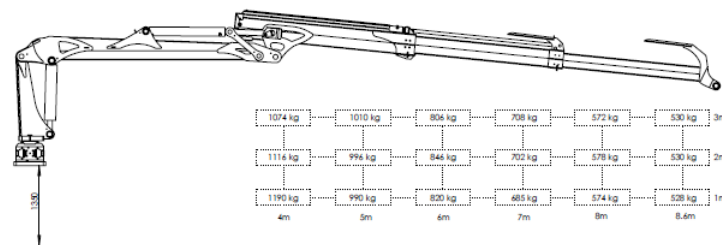
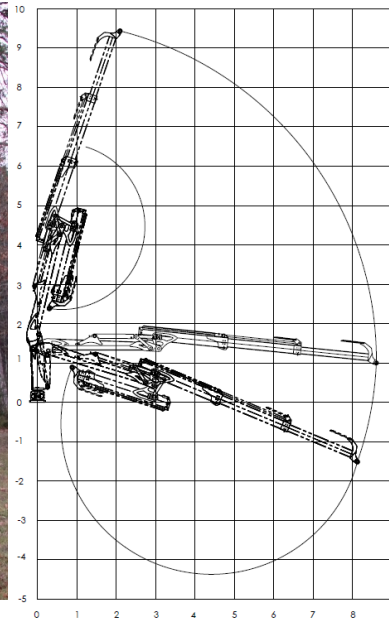


NEW GENERATION FOREST CRANES

ONIAR 7400



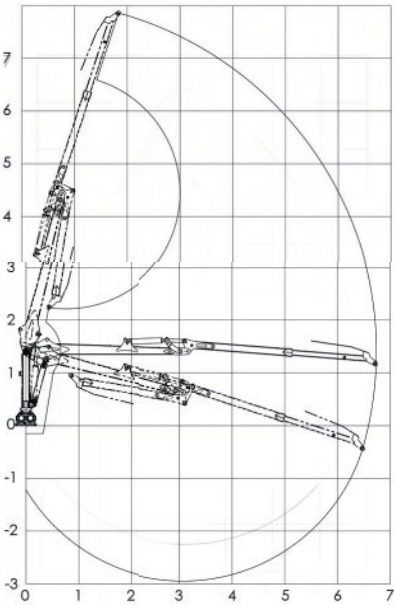
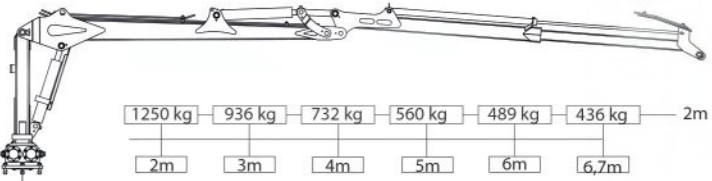
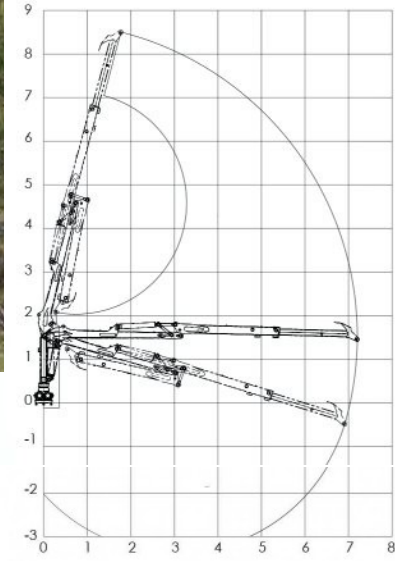
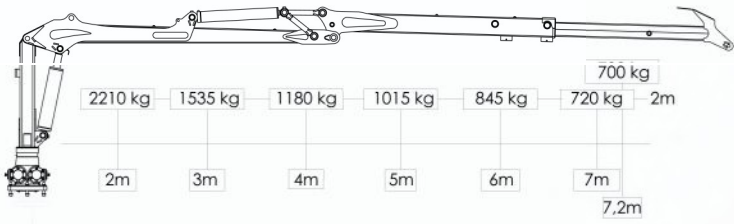
ONIAR 8600



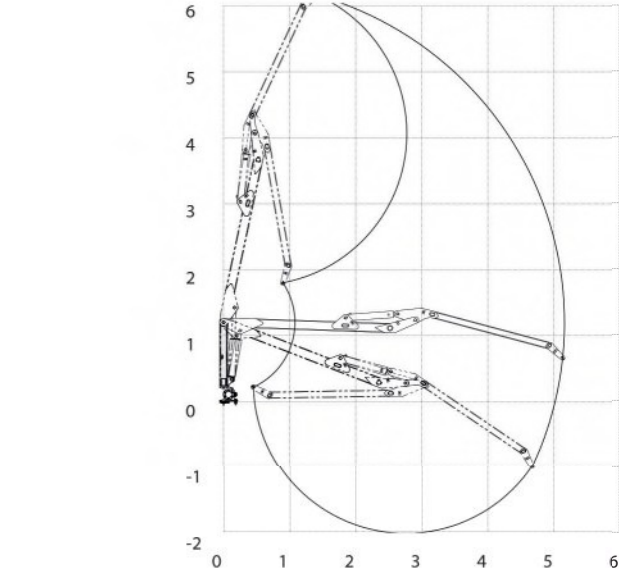
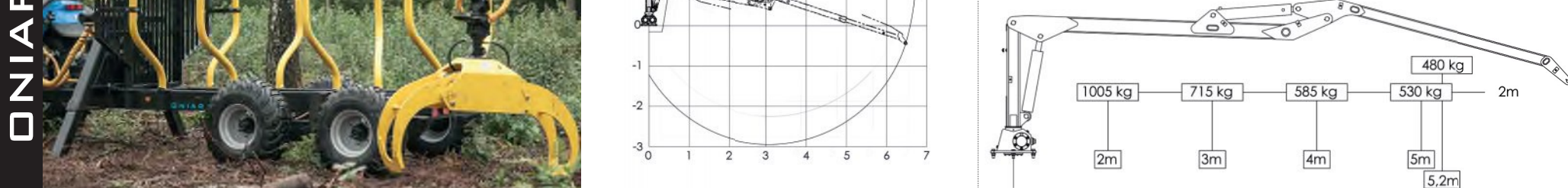
TECHNICAL INFORMATION - CRANES

	52	67s	72	7400	8600	
Lifting force, gross	33	46	72	72	72	kNm
Lifting force, nett	22	30	45	51	45	kNm
Maximum reach	5.2	6.7	7.2	7.4	8.6	m
Teleskoobi ulatus	-	1.34	1.51	2.0	3.4	m
Real lifting capacity in 4 meters (w/o grapple/rotator)	585	732	1180	1205	1110	kg
Real lifting capacity in full length (w/o grapple/rotator)	480	436	700	705	530	kg
Slewing torque, gross	5.7	14	15	21	21	kNm
Slewing angle	390	390	390	370	370	°
Recomm. pump capacity	30-50	40-60	50-80	60-80	60-80	l/min
Weight (w/o grapple/rotator)	530	880	1140	1075	1175	kg

ONIAR 72



ONIAR 67S

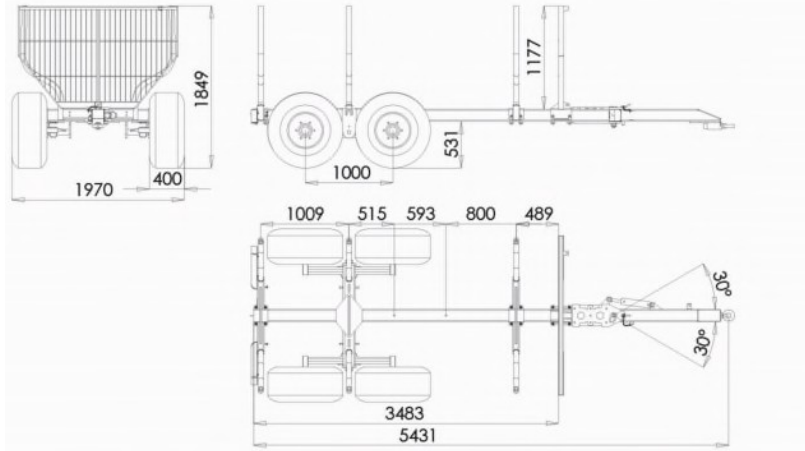


ONIAR 52

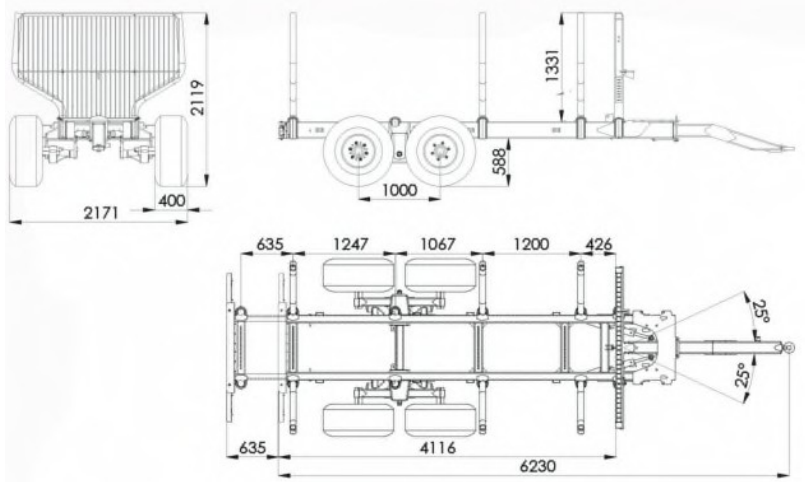
FOREST CRANES

FOREST TRAILERS

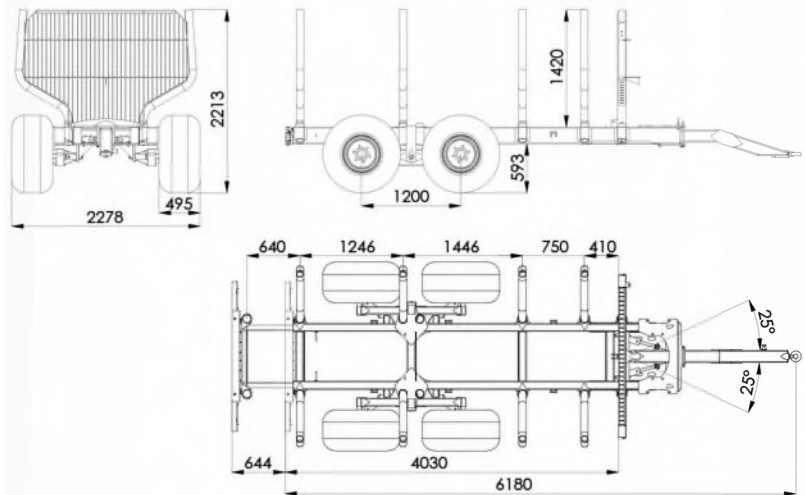
ONIAI 7T



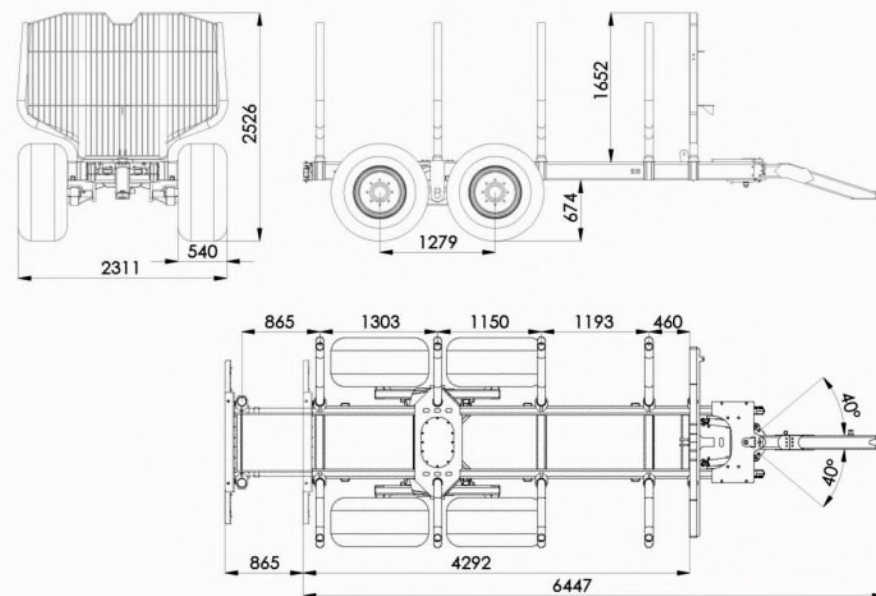
ONIAI 10T



ONIAI 12T



ONIAR 14T



FOREST TRAILERS

TECHNICAL INFORMATION - TRAILERS	7T	10T	12T	14T	
Loading capacity	7000	10000	12000	14000	kg
Load volume / area	1.9	2.25	2.55	3.0	m ²
Trailer frame profile	140x140x8	2x(200x100x6)	2x(200x100x6)	2x(200x100x8)	mm
Standard axles	60x60	70x70	80x80	90x90	mm
Steering drawbar	optional	standard	standard	standard	
Trailer weight	1100	1700	1800	2100	kg

GRAPPLES

ONIAR G16



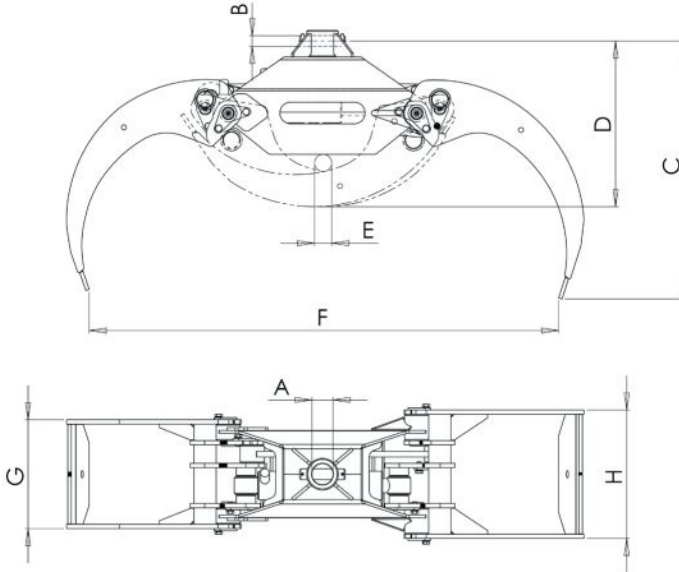
ONIAR G19



ONIAR G21



ONIAR G23



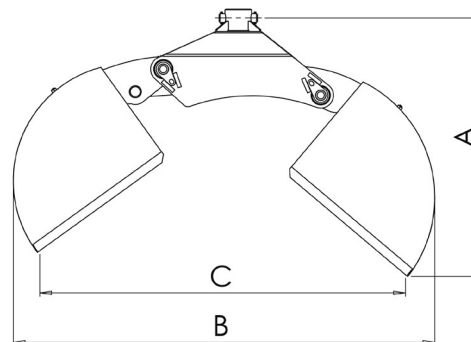
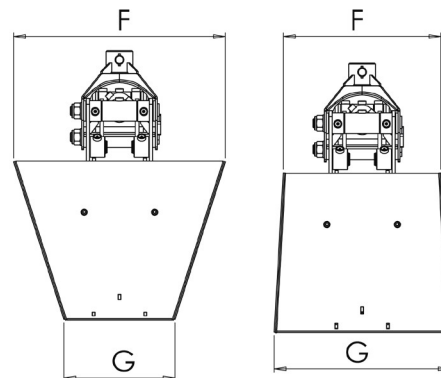
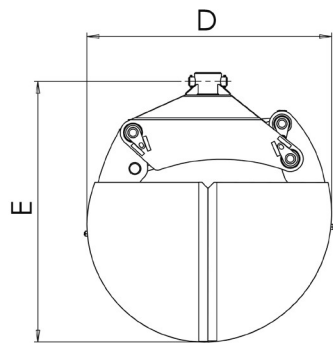
ONIAR G23E



TECHNICAL INFORMATION		G16	G19	G21	G23	G23E			G16	G19	G21	G23	G23E	
Weight	kg	70	80	120	110	110		D	mm	436	447	583	466	466
Volume	m ²	0.16	0.19	0.21	0.23	0.23		E	mm	88	81	82	67	67
A	mm	49	49/59	49/59	59	59		F	mm	1223	1259	1230	1344	1353
B	mm	25	25/30	25/30	30	30		G	mm	148	180	215	306	306
C	mm	648	701	798	726	669		H	mm	178	220	259	361	361



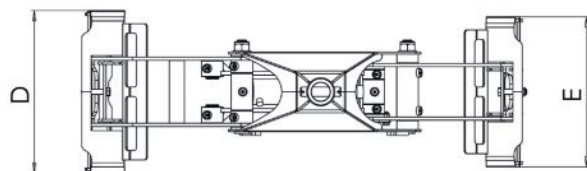
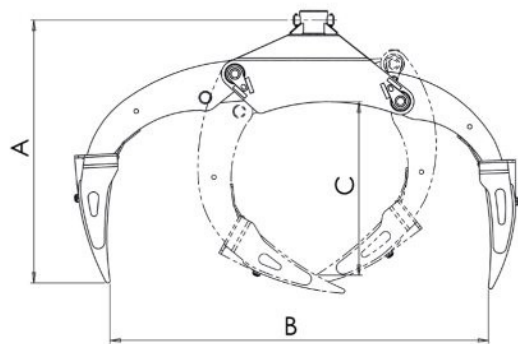
Gravel bucket



Gravel bucket



Agricultural bucket



Silage forks kit



Gravel bucket

TECHNICAL INFORMATION		Gravel and agricultural buckets			Silage forks		
		G16	G19	G23	G16	G19	G23
Weight	kg	45	57	67	20	27	42
Volume	l	125	185	250	-	-	-
A	mm	792	861	834	709	833	850
B	mm	1363	1404	1507	1183	1199	1278
C	mm	1195	1220	1319	448	550	488
D	mm	749	813	934	416	516	816
E	mm	780	868	896	376	476	776
		Gravel buckets			Agricultural buckets		
		G16	G19	G23	G16	G19	G23
F	mm	606	706	807	436	526	638
G	mm	311	371	470	486	587	699



B4 - multilever control



B5 - 5/7 XY



B6 - 4/7 XYZ



B8 - 6/8 XY



B9 - 4/8 XYZ



**B12 - 4/8 XY
2x el. on-off**



**B18 - 2/8 pre hydraulic
(pilot operated)**



**B20 - full electric propo
with mini joysticks**



B25 - radio control



Aggregate tipping body



Aggregate tipping body



Agricultural tipping body



Flatbed body

ATTACHMENTS



Wing type hydraulic support legs.



'A' type hydraulic support legs.



Optional independent hydraulic system driven by tractor PTO.



Optional operator control valve support & standing platform.



Wide range of tyre sizes.



Choice of hydraulic brakes with internal cylinder or air brakes.



Optional rear frame extension for 10T, 12T and 14T trailers.



Optional fixed or folding rear lights.



Choice of straight or angled daw bars and hitches types.

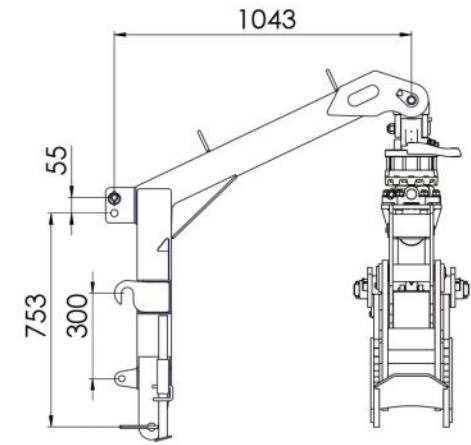


Optional hydraulic winches.
700 kg or 1400 kg pull capacity.

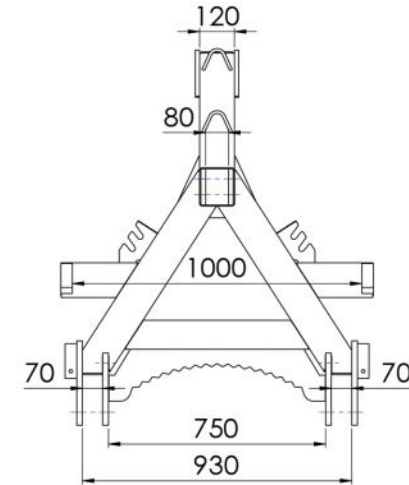
ATTACHMENTS



GR180 linkage / loader grab
without rotator.



Technical information		GR180	G23
Weight	kg	360	240
Volume	m ²	0.33	0.23
Max gripping width	mm	1720	1344
Min gripping diameter	mm	90	67
Rotator force	kNm	40	40
3-point connection		yes	yes
Front loader connection		yes	yes



Hot dip galvanized transport
boxes for branches



3-point mounting standard on most models. May require
extra bracing kit. Can be used with PTO pump & tank.



GR180 with 55 KNm rotator



3-point linkage frame with 40 kNm
rotator and G23 grab.

SKIDDING GRAPPLES



Riko UK
Inverallen Yard, Main Road
Kingsley, Hampshire
GU35 9LW

sales@riko-uk.com
phone 01420 487300
www.riko-uk.com
www.oniar.eu